

# Crown Land Forest Management

## Report Inconsistent Practices

Maritime SFI Implementation Committee 1-800-631-3657

Port Hawkesbury Paper 1-866-875-1869

[woodlands@porthawkesburypaper.com](mailto:woodlands@porthawkesburypaper.com)





# Perception



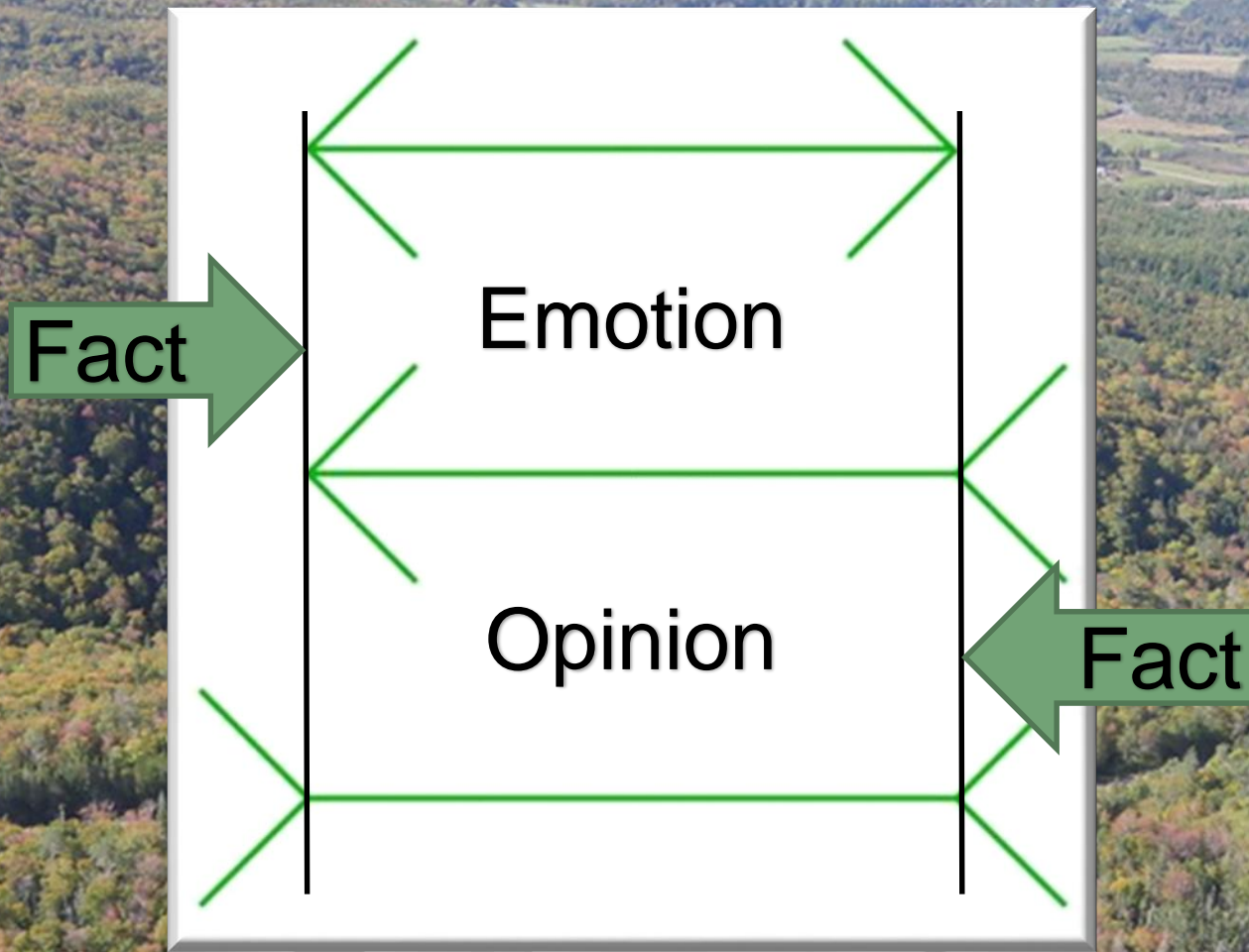
The diagram is a white rectangular box with a thin grey border, centered over a background of a dense forest with autumn foliage. Inside the box, the word 'Perception' is at the top. Below it are three horizontal green double-headed arrows. The word 'Emotion' is positioned between the first and second arrows. The word 'Opinion' is positioned between the second and third arrows. The third arrow is at the bottom of the box and has no text between it and the next level.

Emotion

Opinion



# Perception

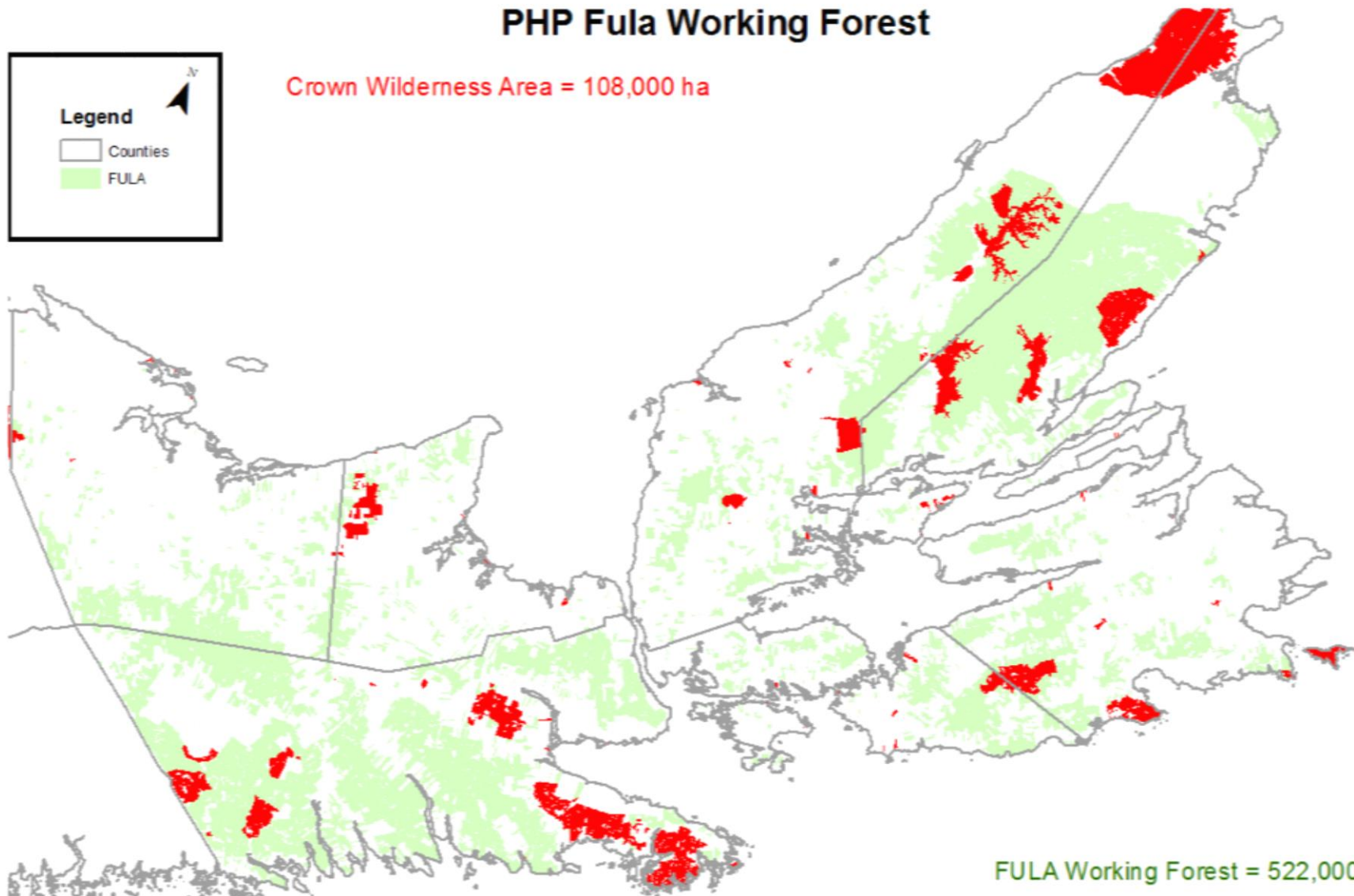
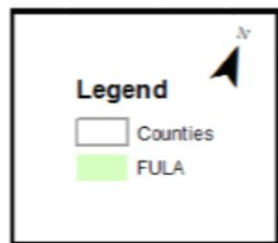




# Protected Areas?

# PHP Fula Working Forest

Crown Wilderness Area = 108,000 ha

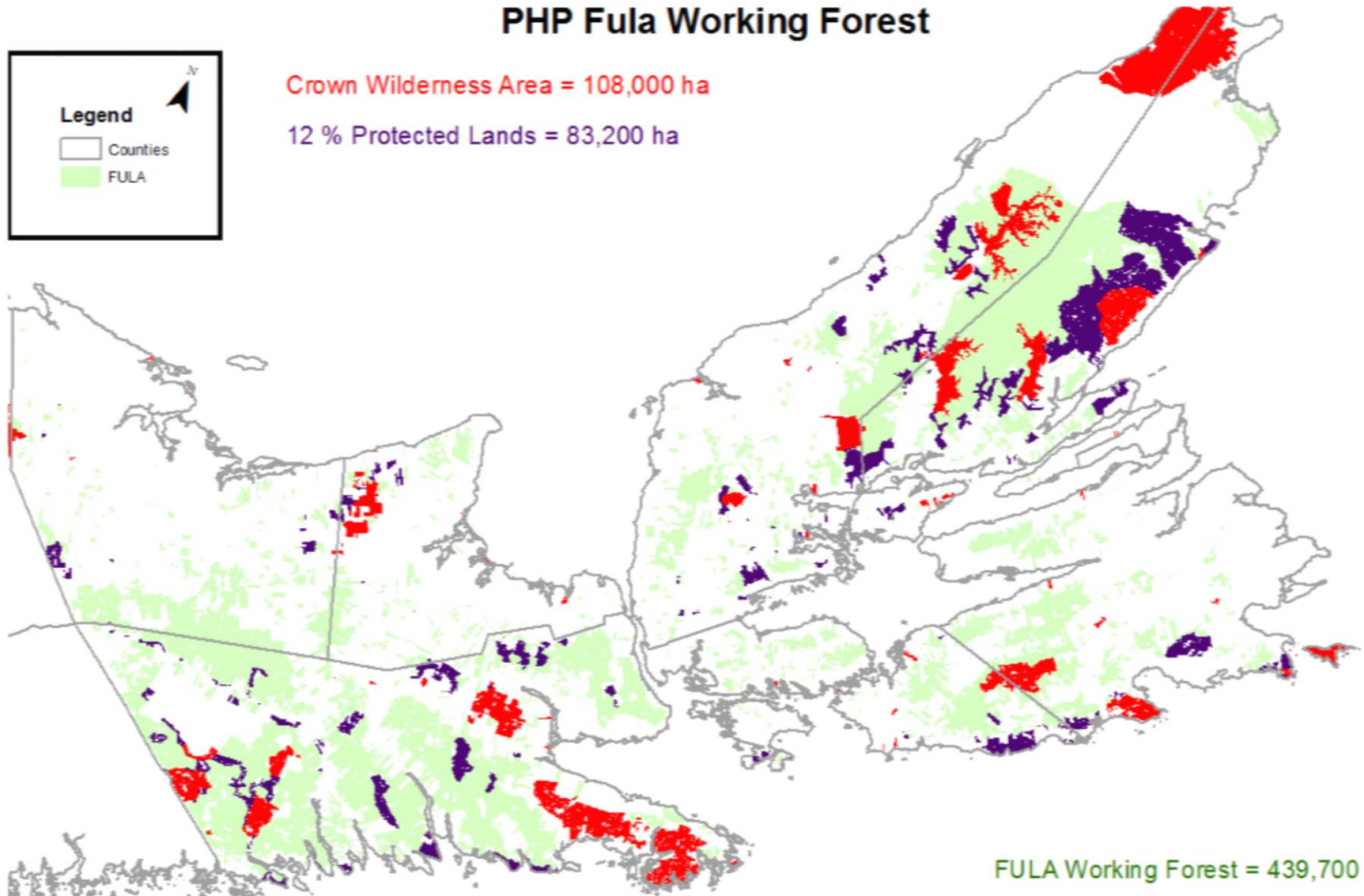
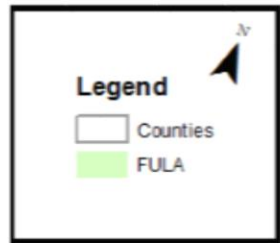




# PHP Fula Working Forest

Crown Wilderness Area = 108,000 ha

12 % Protected Lands = 83,200 ha



FULA Working Forest = 439,700 ha

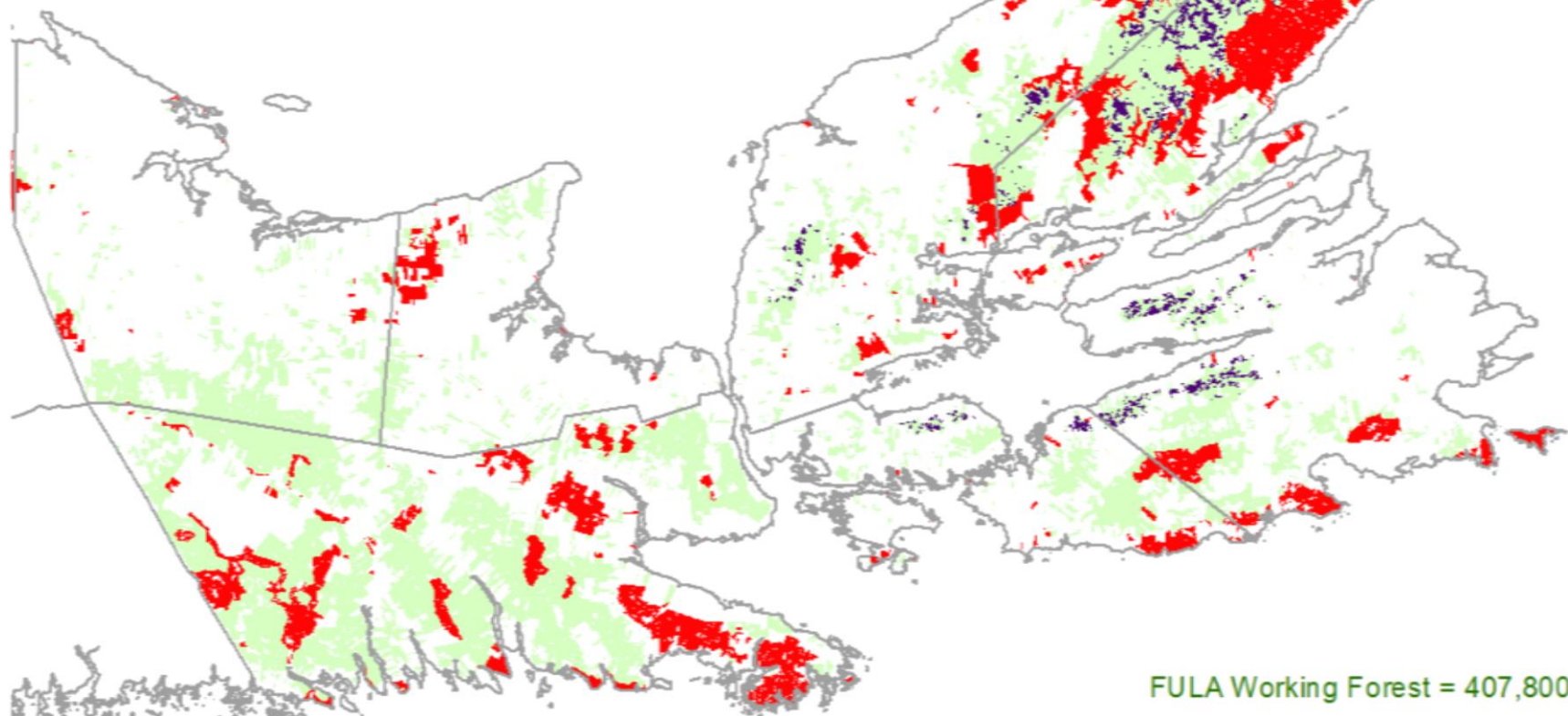
## PHP Fula Working Forest

Total Protected = 191,200 ha

Lynx Bog Buffers = 31,900 ha

### Legend

- Counties
- FULA



FULA Working Forest = 407,800 ha



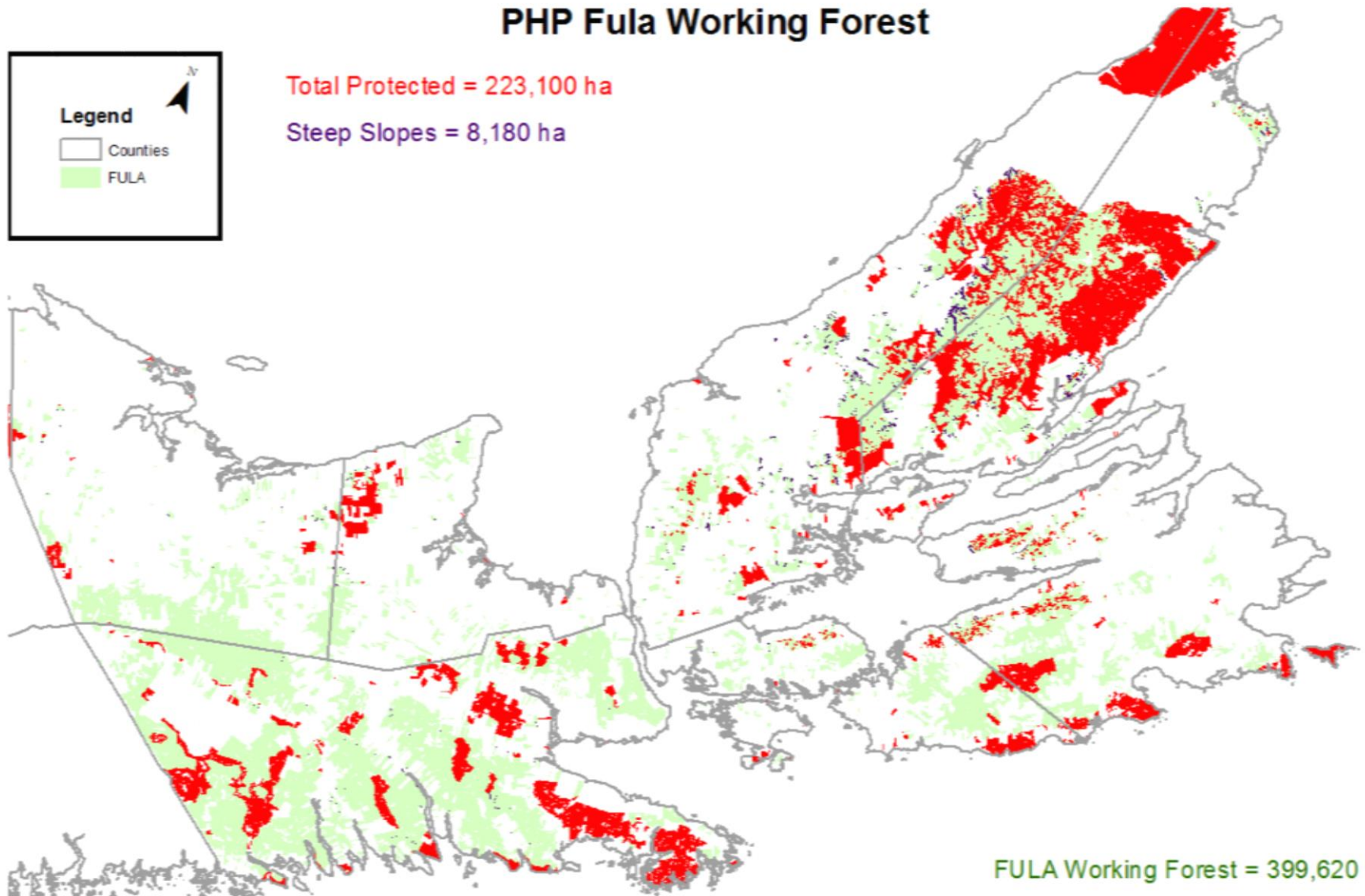
# PHP Fula Working Forest

Total Protected = 223,100 ha

Steep Slopes = 8,180 ha

## Legend

- Counties
- FULA



FULA Working Forest = 399,620 ha



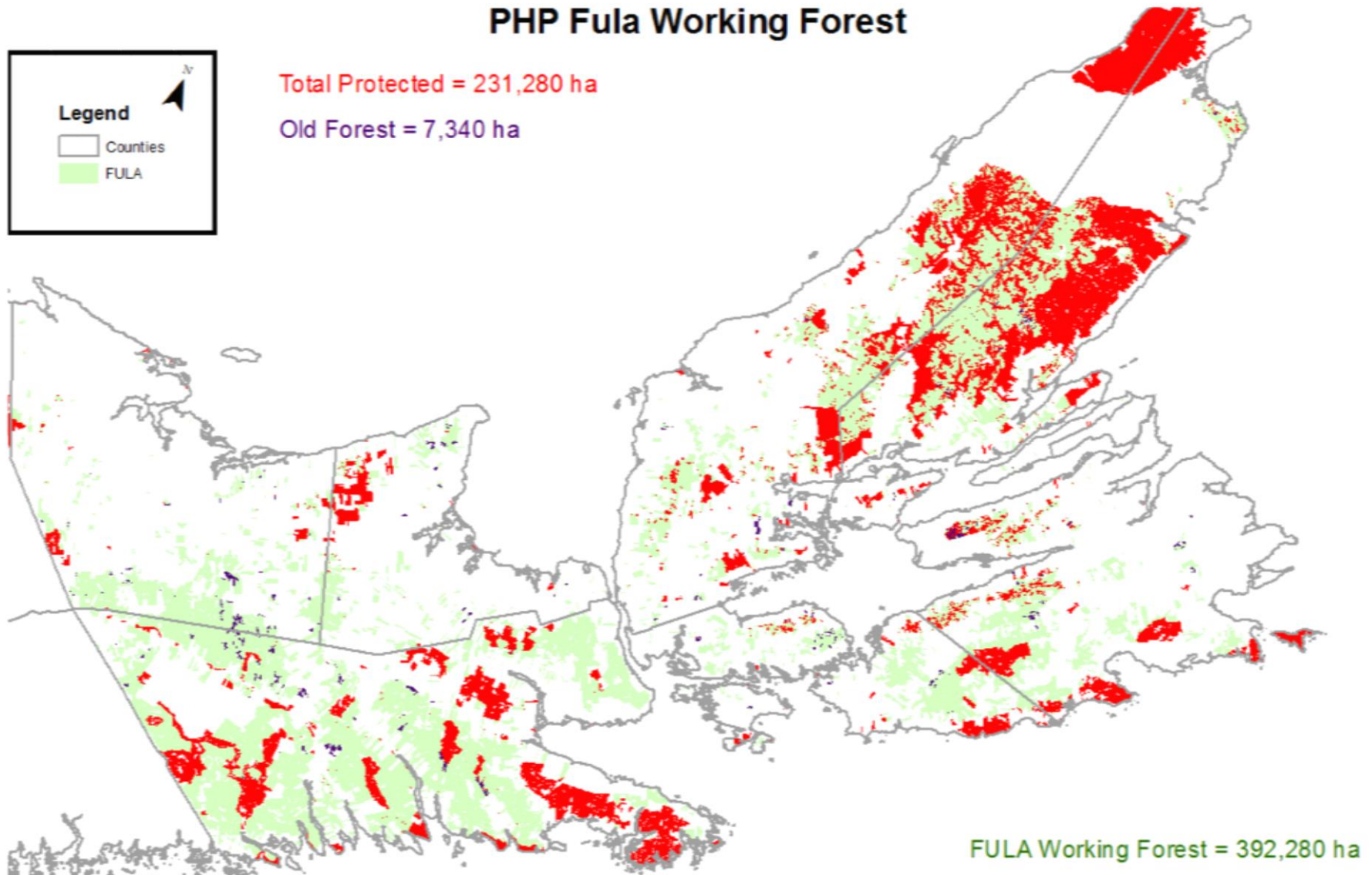
# PHP Fula Working Forest

Total Protected = 231,280 ha

Old Forest = 7,340 ha

## Legend

- Counties
- FULA





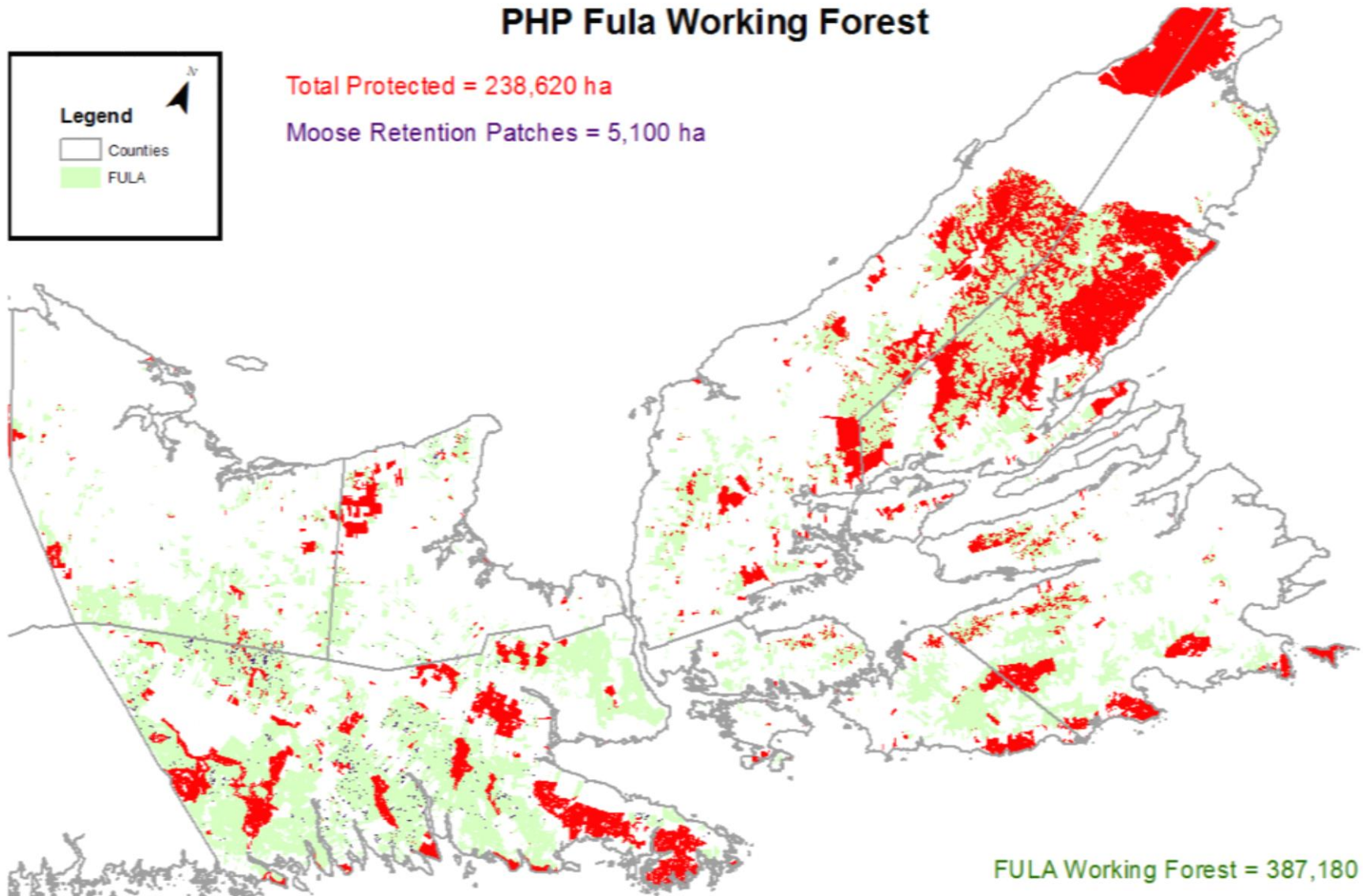
# PHP Fula Working Forest

Total Protected = 238,620 ha

Moose Retention Patches = 5,100 ha

## Legend

- Counties
- FULA



FULA Working Forest = 387,180 ha



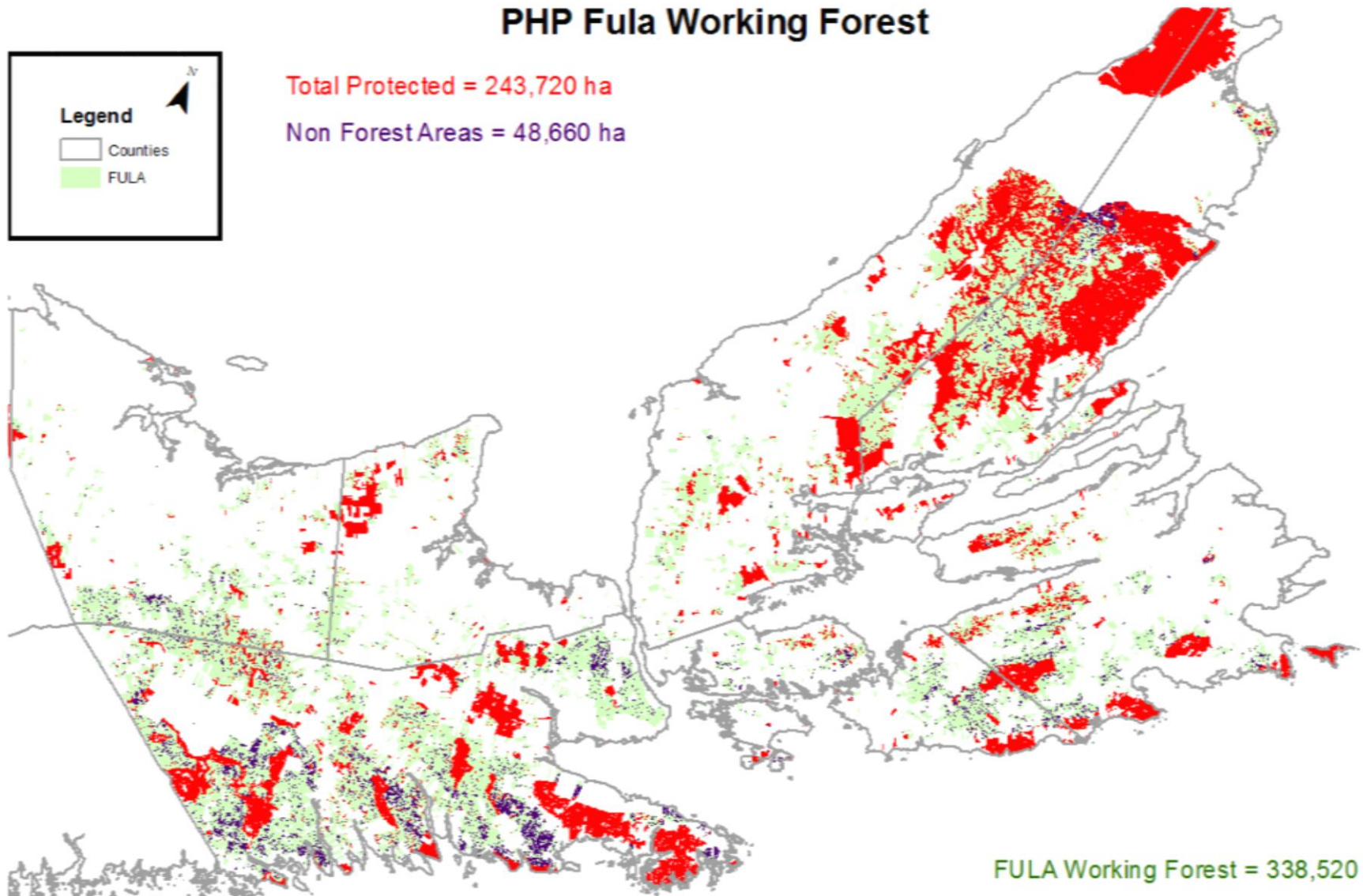
# PHP Fula Working Forest

Total Protected = 243,720 ha

Non Forest Areas = 48,660 ha

## Legend

- Counties
- FULA



FULA Working Forest = 338,520 ha



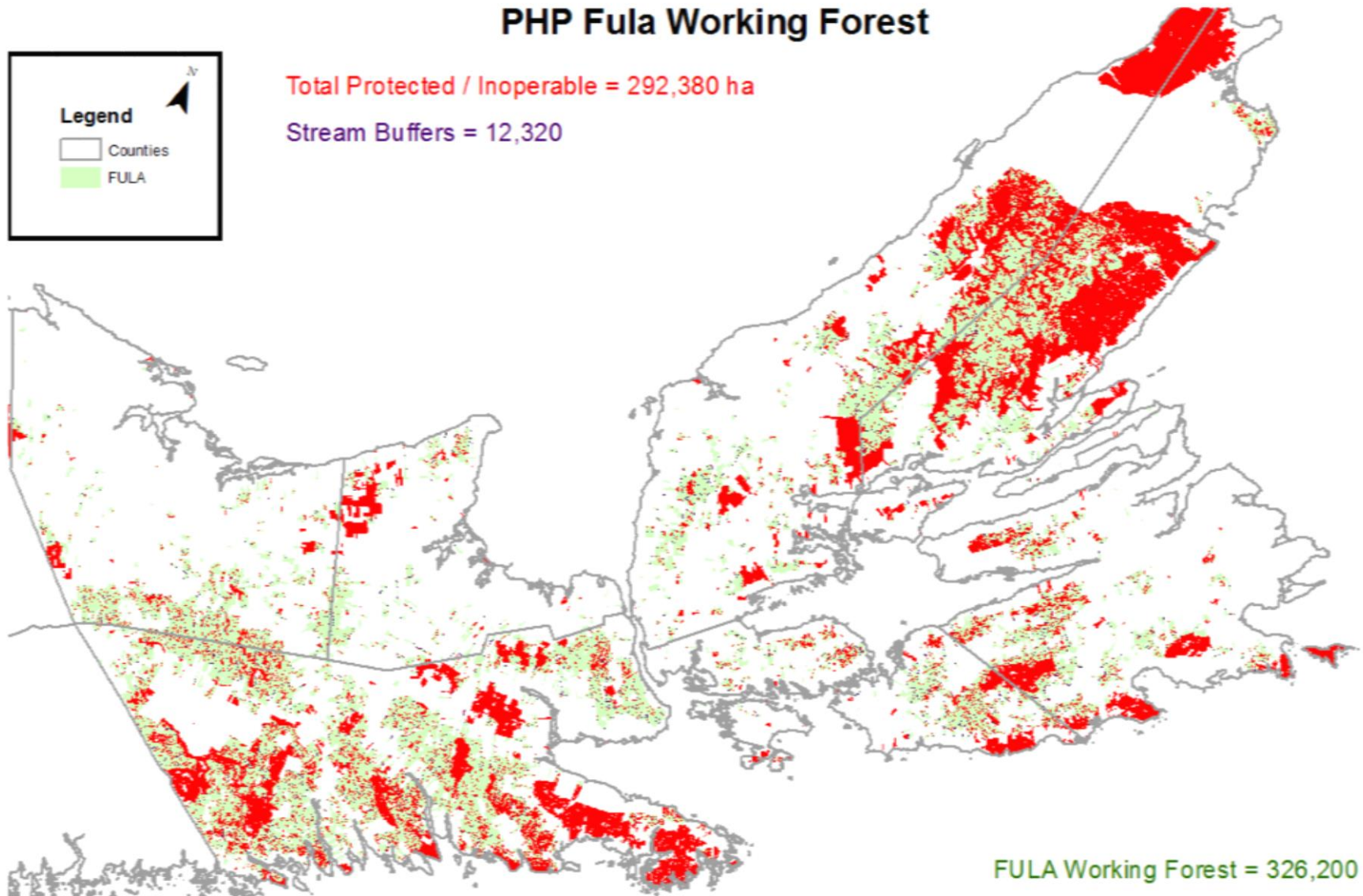
# PHP Fula Working Forest

Total Protected / Inoperable = 292,380 ha

Stream Buffers = 12,320

## Legend

- Counties
- FULA



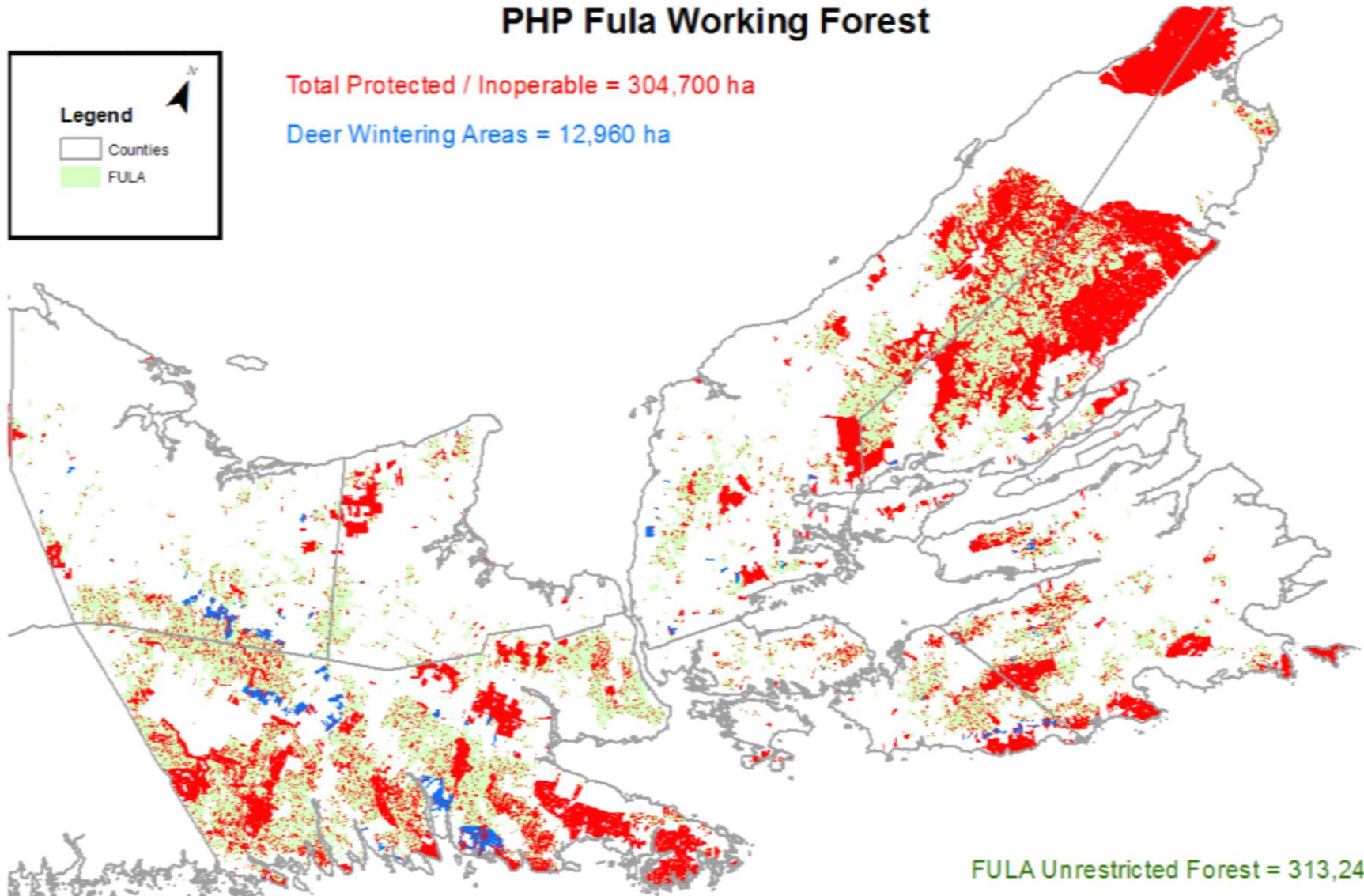
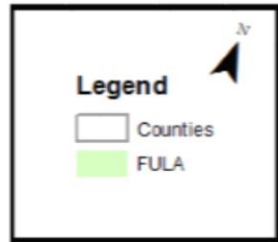
FULA Working Forest = 326,200 ha



# PHP Fula Working Forest

Total Protected / Inoperable = 304,700 ha

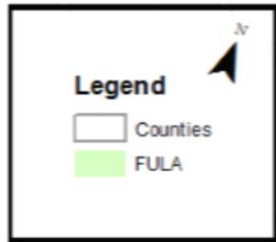
Deer Wintering Areas = 12,960 ha



FULA Unrestricted Forest = 313,240 ha



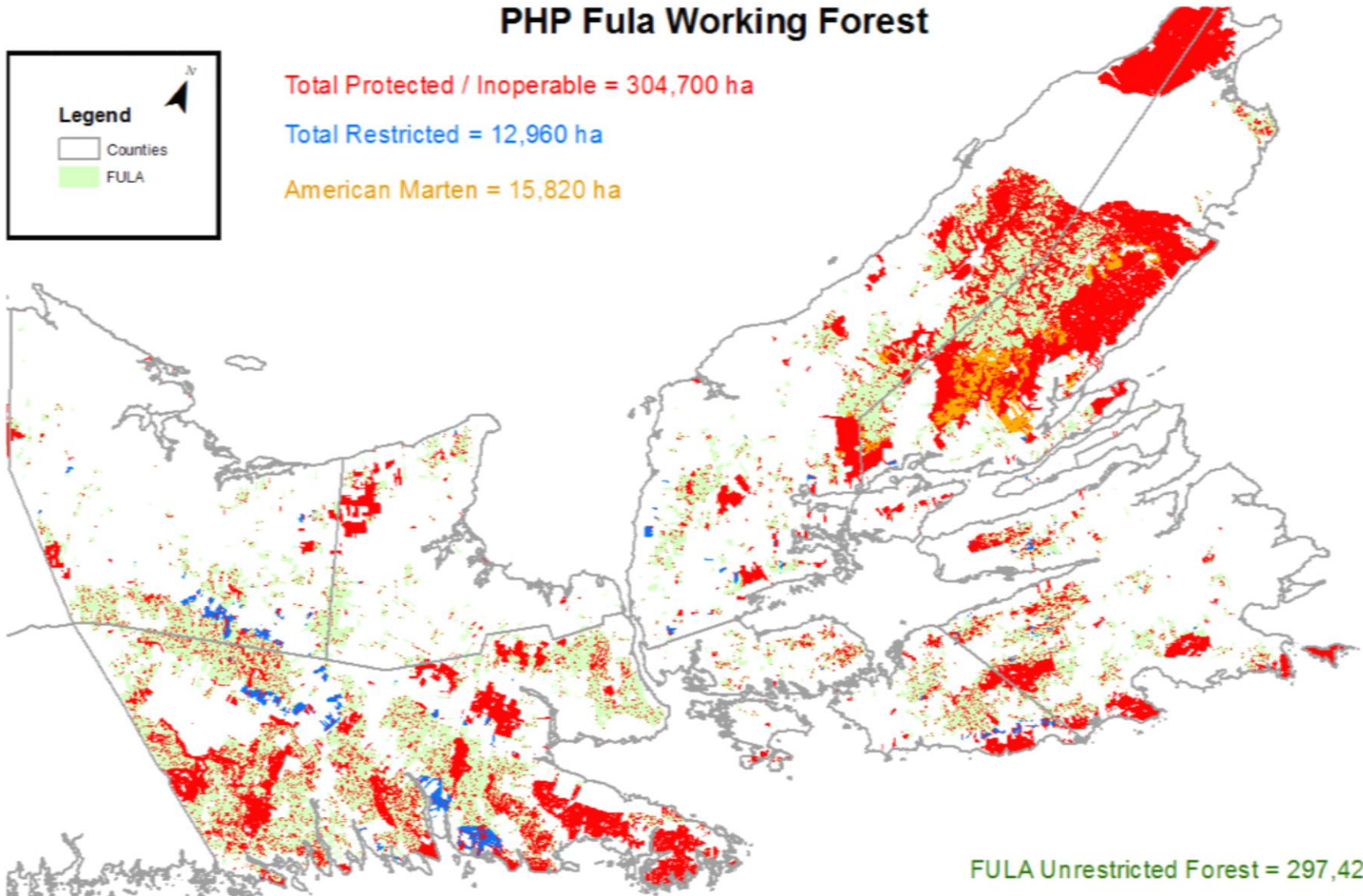
# PHP Fula Working Forest



Total Protected / Inoperable = 304,700 ha

Total Restricted = 12,960 ha

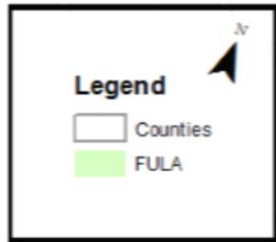
American Marten = 15,820 ha



FULA Unrestricted Forest = 297,420 ha



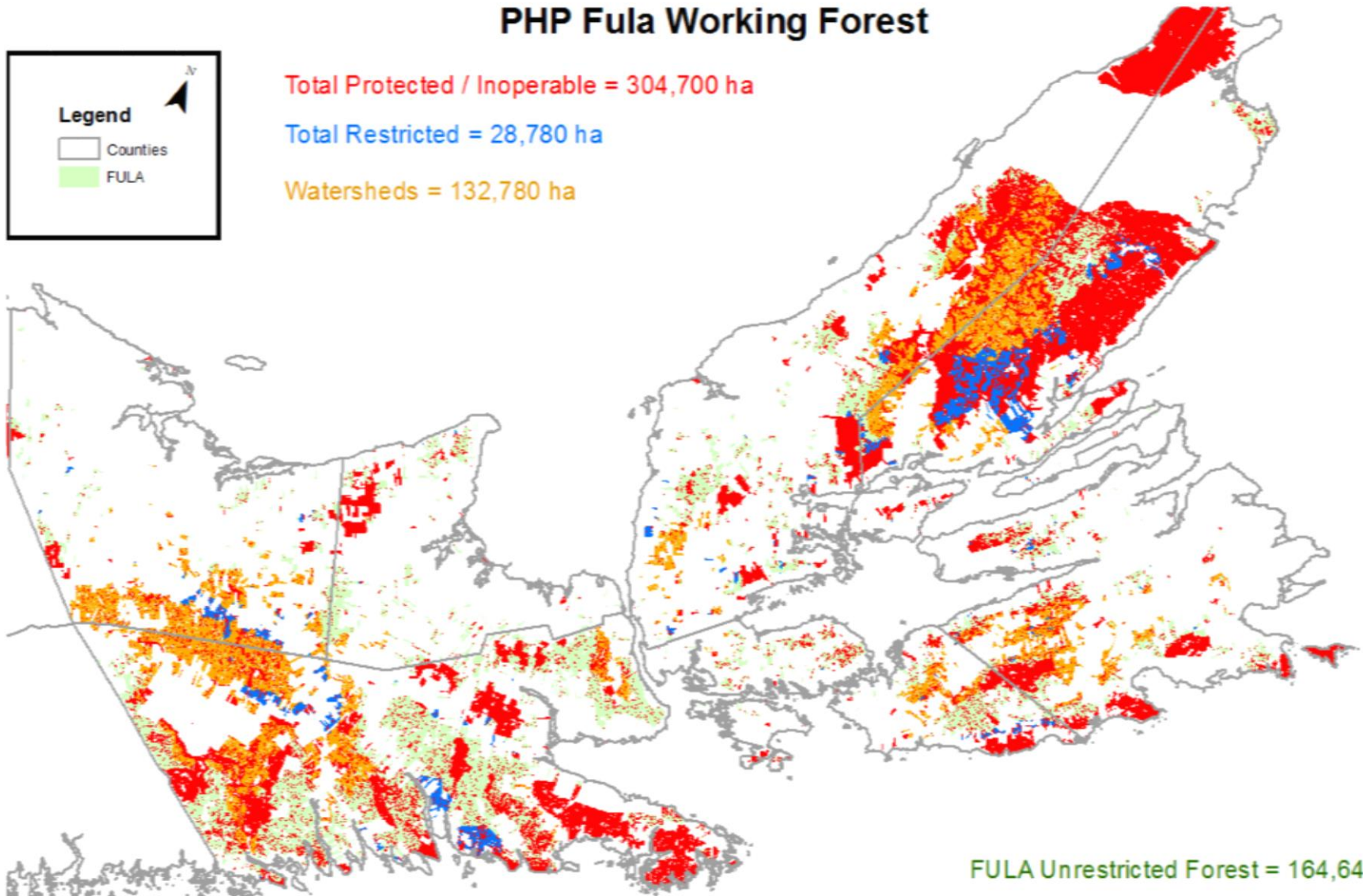
# PHP Fula Working Forest



Total Protected / Inoperable = 304,700 ha

Total Restricted = 28,780 ha

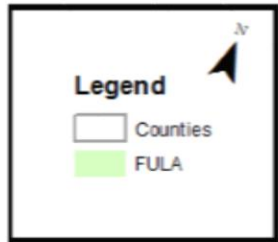
Watersheds = 132,780 ha



FULA Unrestricted Forest = 164,640 ha



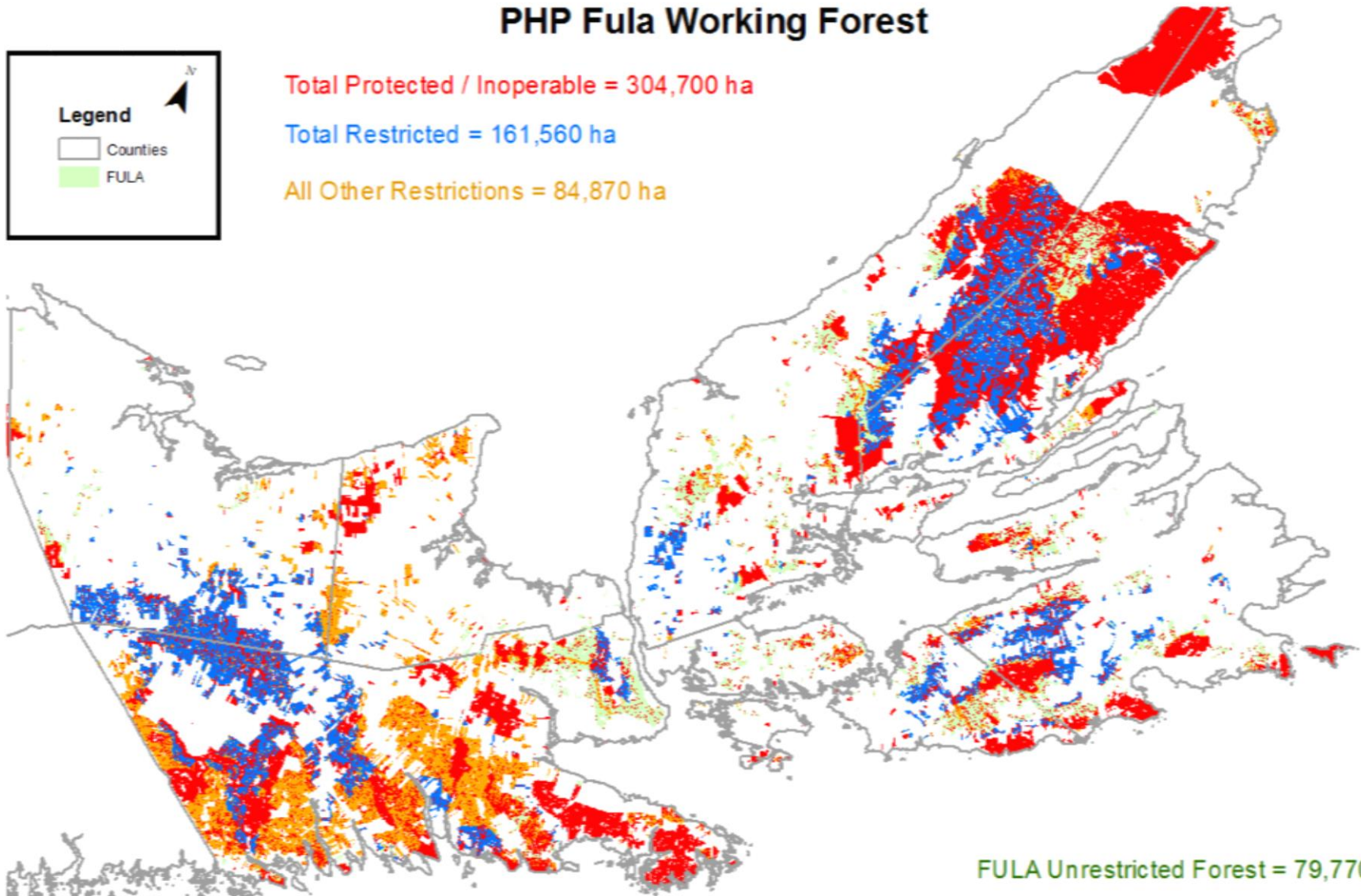
# PHP Fula Working Forest



Total Protected / Inoperable = 304,700 ha

Total Restricted = 161,560 ha

All Other Restrictions = 84,870 ha



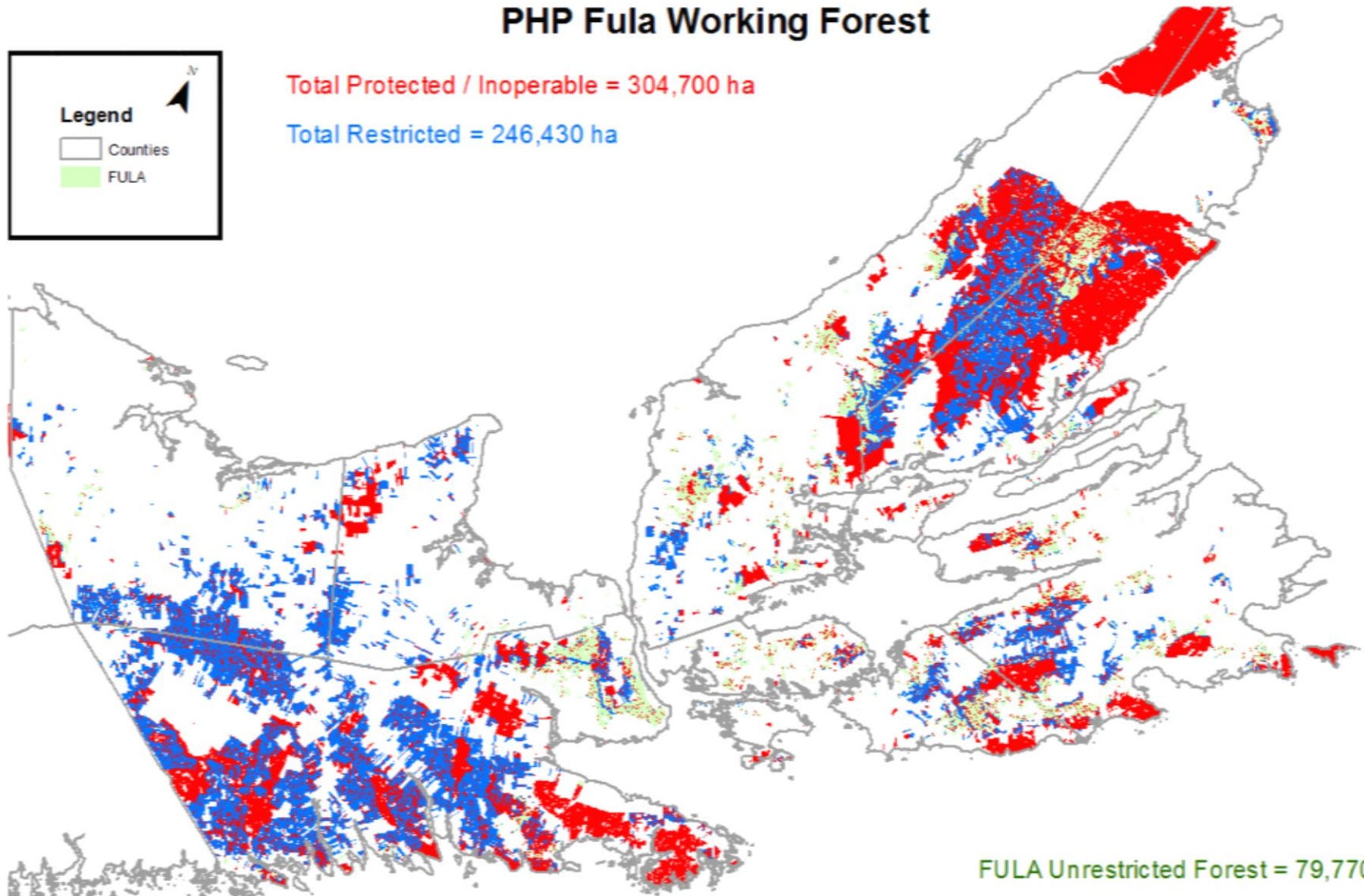
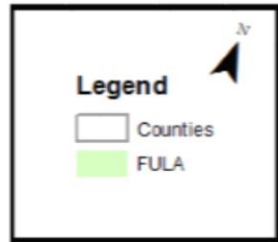
FULA Unrestricted Forest = 79,770 ha



# PHP Fula Working Forest

Total Protected / Inoperable = 304,700 ha

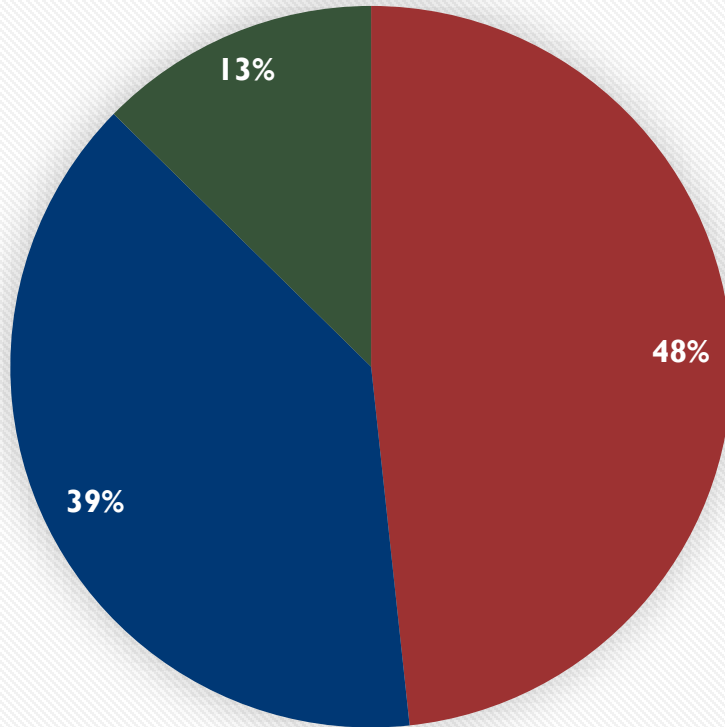
Total Restricted = 246,430 ha



FULA Unrestricted Forest = 79,770 ha

# Crown License Utilization

**PHP FULA Landbase**



■ Protected / Inoperable ■ Restricted (SMP) ■ Unrestricted



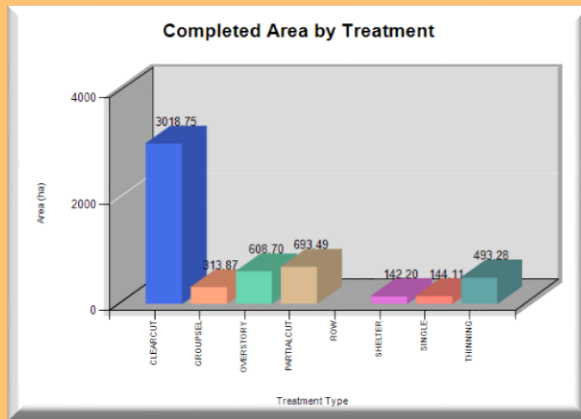


An aerial photograph of a vast forest landscape. The foreground and middle ground show large, irregular clearcuts where the dense forest has been removed, revealing a lighter green, grassy or regenerating forest floor. These clearcuts are separated by narrow, winding roads or tracks. The background shows rolling hills and more forested areas under a blue sky with scattered white clouds.

# Clearcuts?

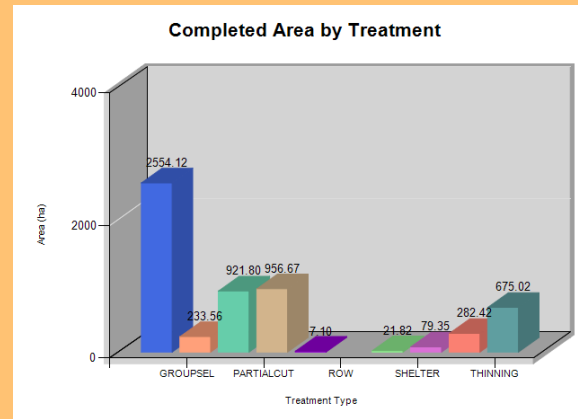
# Clearcut / Non Clearcut

**2014**



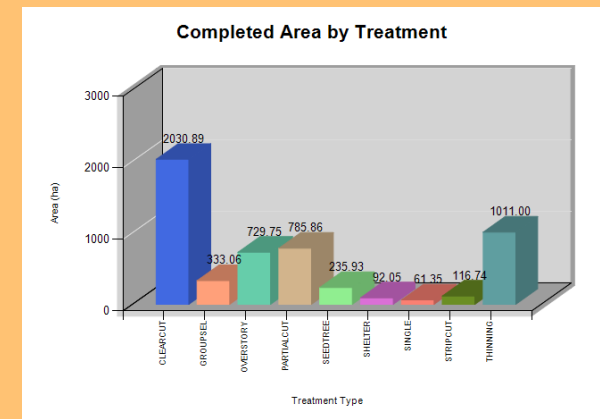
**2014 = 56% CC**

**2015**



**2015 = 45% CC**

**2016**



**2016 = 42% CC**

- Average yearly crown harvest = 5,500 hectares
- Average yearly clearcut harvest = 2621 hectares
- **Average yearly silviculture (tending) = 4115 hectares**



An aerial photograph of a vast landscape. The foreground and middle ground are dominated by a dense, green forest. Interspersed within the forest are several irregularly shaped patches of cleared land, appearing as bright green fields. Some of these cleared areas contain small clusters of buildings, likely farmhouses or small villages. In the far distance, the forest gives way to a flatter area with more open fields and a few more buildings. The sky is overcast and grey, suggesting a cloudy day. The overall scene depicts a landscape where agriculture or land clearing is ongoing or has recently occurred within a forested region.

# Herbicides?



An aerial photograph of a vast, dense forest landscape. A winding road or path cuts through the forest, leading towards a small, dry, brownish pond or clearing on the right side. The forest is composed of many trees with varying shades of green and yellow, suggesting an autumn or early spring setting. The horizon is flat and distant under a clear blue sky.

# Certification?



# Biomass & Hardwood?



An aerial photograph of a forest landscape. The forest is composed of many tall, thin trees, likely eucalyptus, which are densely packed in some areas and more sparse in others. A yellow logging machine is visible in the lower center of the image, moving through the trees. The ground is covered with a mix of green foliage and brown, cleared areas. The overall scene suggests a logging operation in progress.

# Accountability?



# Inverness County





## Report Inconsistent Practices

Maritime SFI Implementation Committee 1-800-631-3657

Port Hawkesbury Paper 1-866-875-1869

[woodlands@porthawkesburypaper.com](mailto:woodlands@porthawkesburypaper.com)

