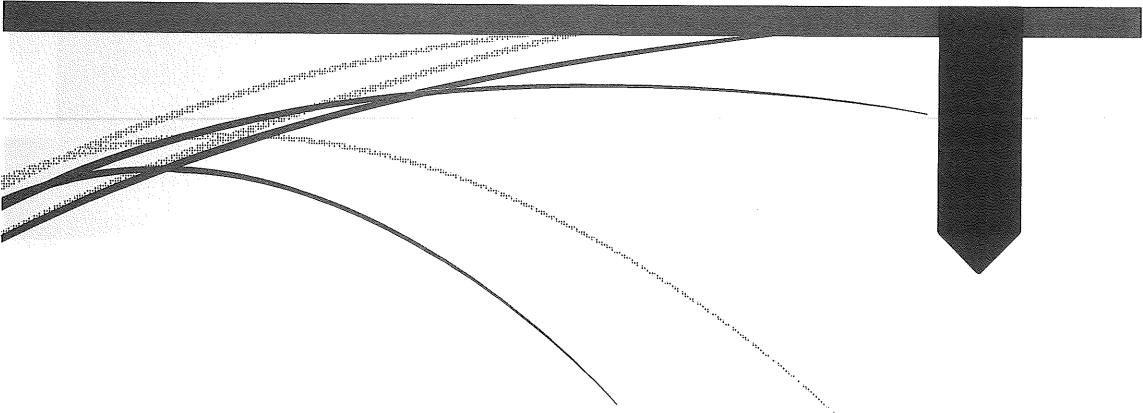




Cape Mabou Pasture Co-operative Ltd.

Incorporated 2001



Restoration of the Handling Facilities on Cape Mabou Community Pasture

Work Accomplished:

- Map of the Pasture
- Repairs made to the Front Corral
- Entrance to the yard
- New Fence along side Driveway
- Clean Up Done at the Building – Gravel Added
- Front Corral - Gravel Added
- Front Corral Rebuilt - 2017
- New Gate at Entrance
- Loading Ramp for Cattle
- Back Corrals Rebuilt – 2018
- Alley at the Back Corral
- Water tub - Gravel Added
- New handling chute for cattle

Dear Inverness County Council:

Thank you for the opportunity to meet with you today. I'm pleased to give your Council a brief breakdown of the activities done this past summer by the Cape Mabou Pasture Cooperative Limited with regards to infrastructure improvements.

The corrals at the main building are used when cattle arrive, leave and are sorted. They had been there for decades and had fallen into disrepair. A total renovation was necessary to make them functional once again. Your generous funding allowed this Board of Directors to totally rebuild the corral system.

Now, staff, volunteers and livestock producers are able to work safely and efficiently when moving and working with the cattle.

Our herdsman Frankie Gillis did the majority of the work of dismantling the old corrals and rebuilding new ones. Volunteers assisted at various phases of the process. Frankie is an essential part of this team and made sure the corrals were constructed perfectly.

I can't stress enough how thankful we are to have such excellent staff and volunteers that assist with all aspects of making this business run smoothly – from repairing fences in all types of weather, administrative duties, digging post holes or rounding up cattle.

The efforts to revive the Cape Mabou Community Pasture has truly become a community undertaking and all efforts to restore this valuable agricultural resource should be applauded.

The Cape Mabou Pasture Cooperative is a business, and it is being managed in a professional and transparent manner. Every expense is recorded and every activity the cooperative has engaged is documented.

Since it began in 1956, the Cape Mabou Community Pasture has been available for all cattle producers to use, both from Cape Breton and the mainland. Quality pasture land is at a premium and this Board of Directors is working hard so that livestock producers, farmers, our community and the County of Inverness can be proud to say that the Cape Mabou Community Pasture is a viable agricultural enterprise.

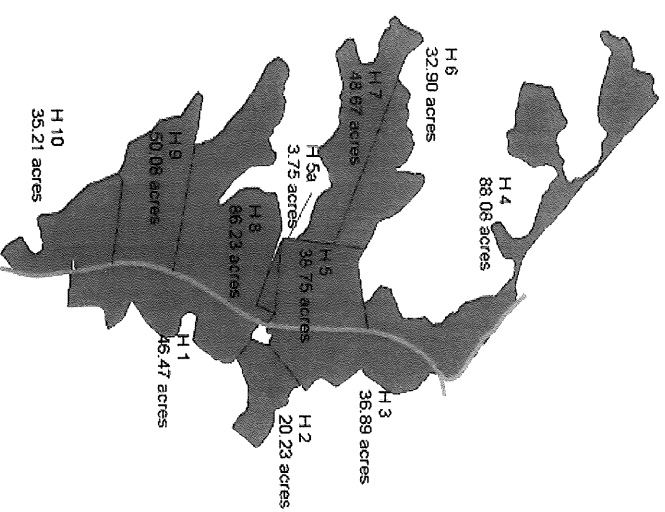
Thank you again for your financial contribution and I welcome any questions.

Sincerely, *Robbieutherland*

Cape Mabou Pasture Co-operative Limited

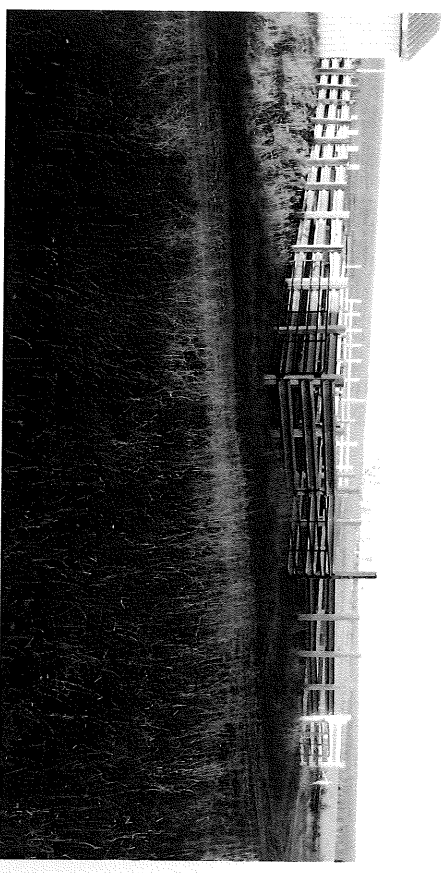
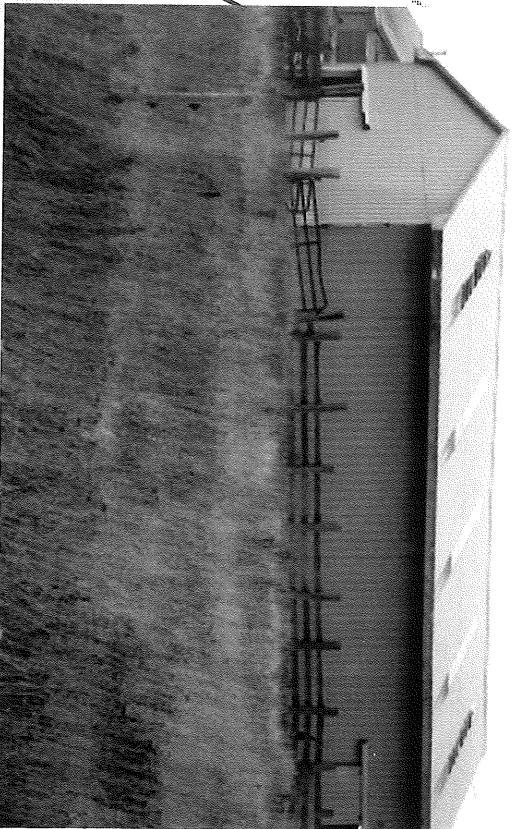
Map of Pastures Used on Cape Mabou South

- 487 acres
- 2 buildings
- Well and pump



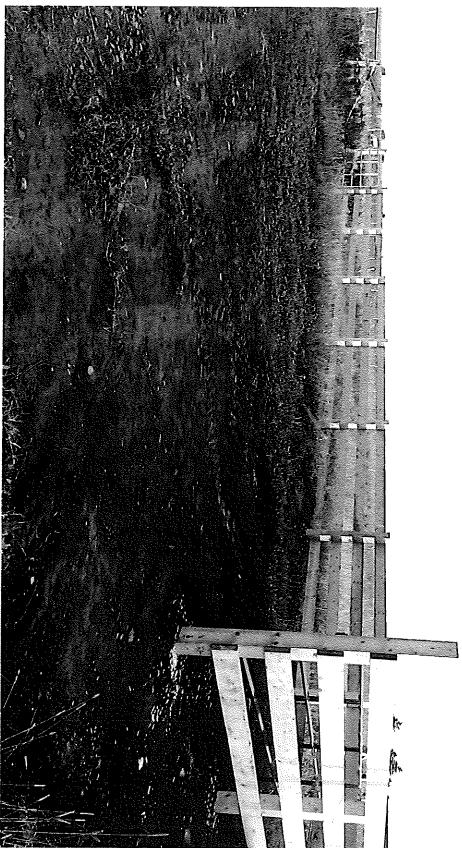
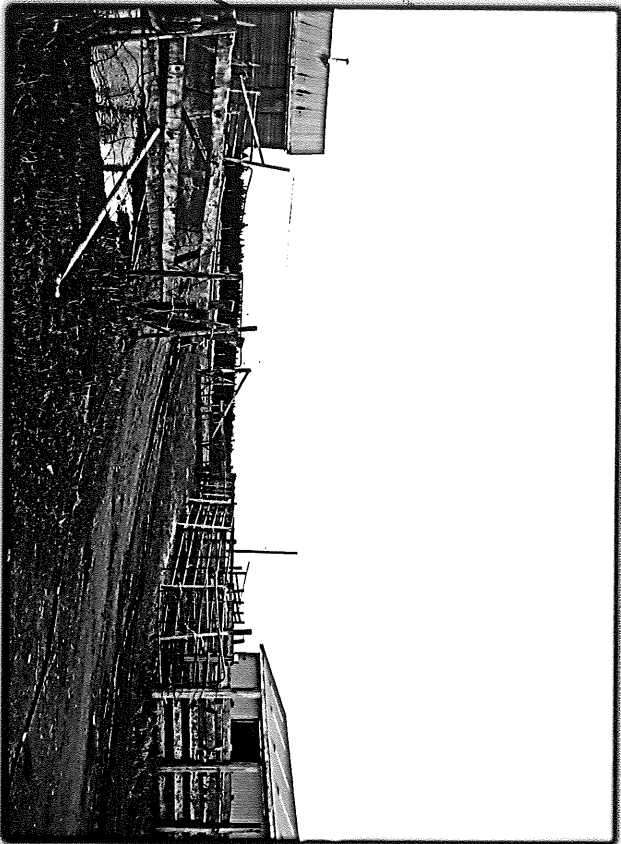
Repairs Made to the Front Corral

Before and After



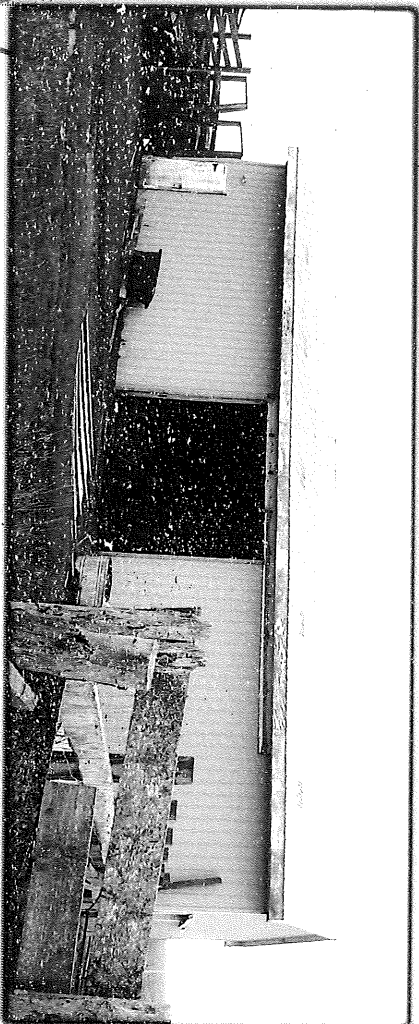
Entrance to the Yard

Before and After



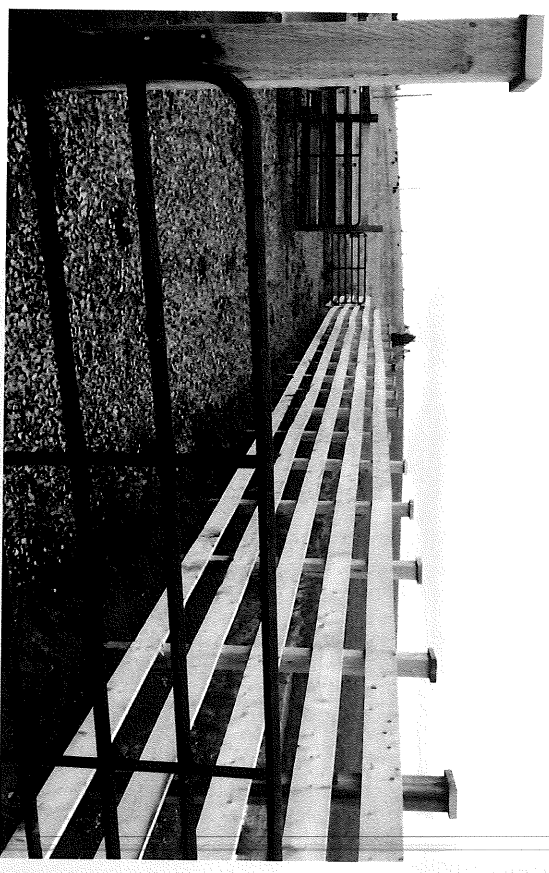
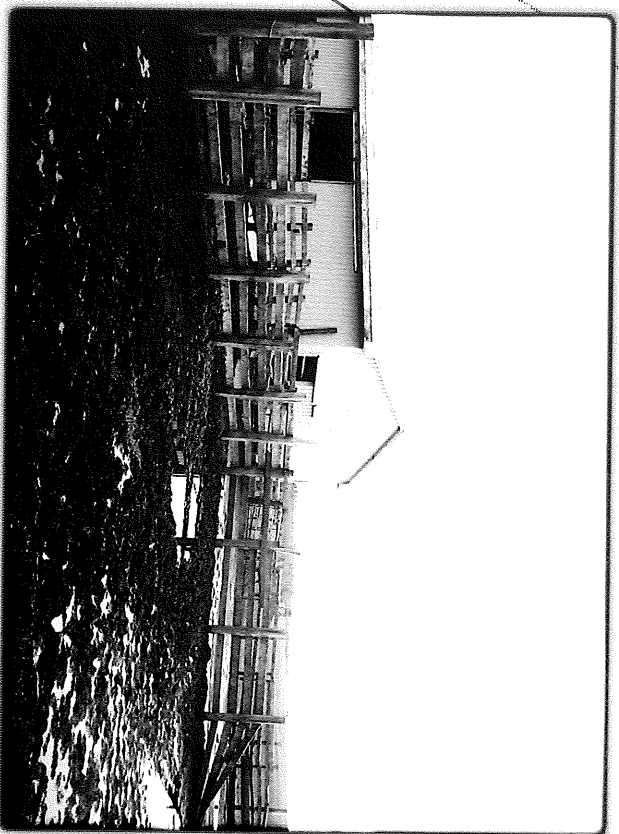
Clean Up Done at the Building Yard

Before and After



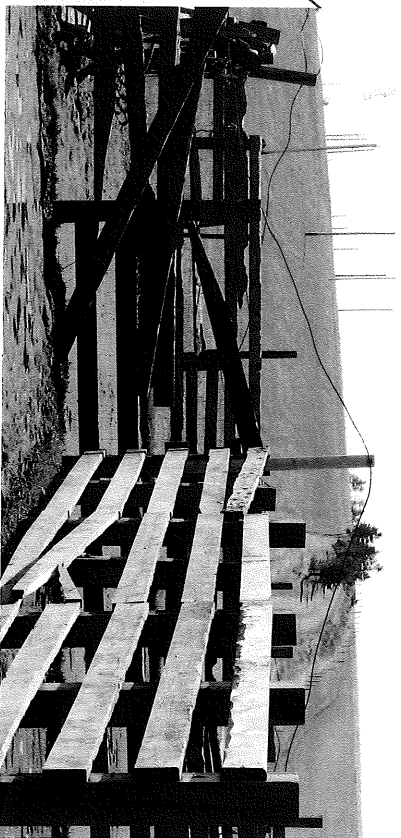
Front Corral – Gravel Added

Before and After



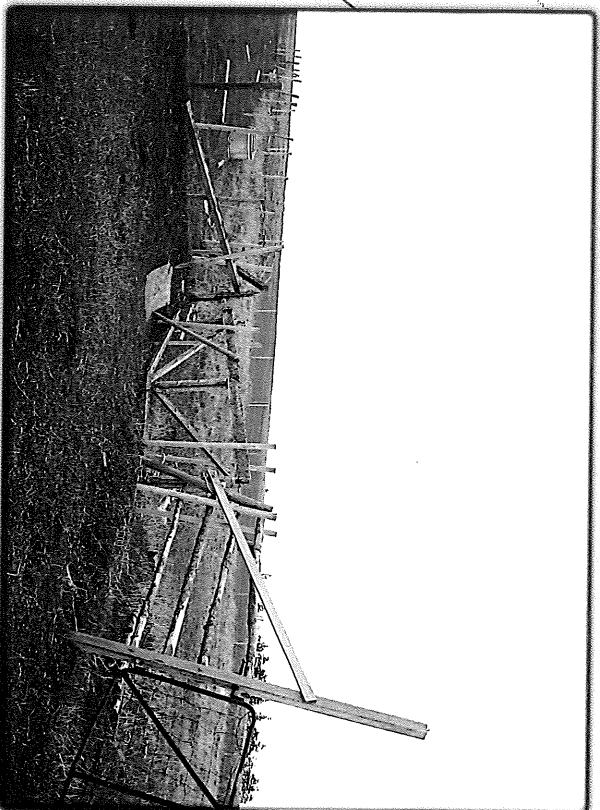
Front Corral Rebuilt – 2017

Before and After



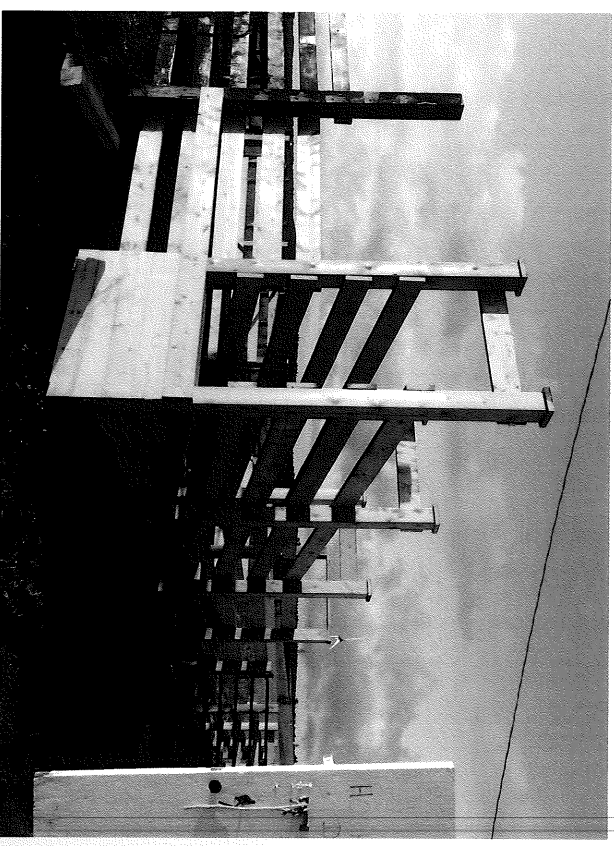
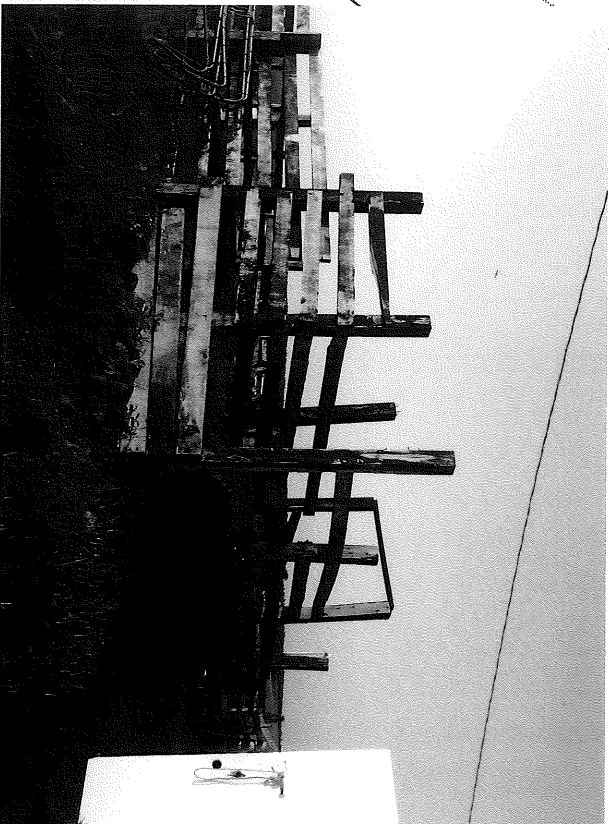
Gate at Entrance

Before and After



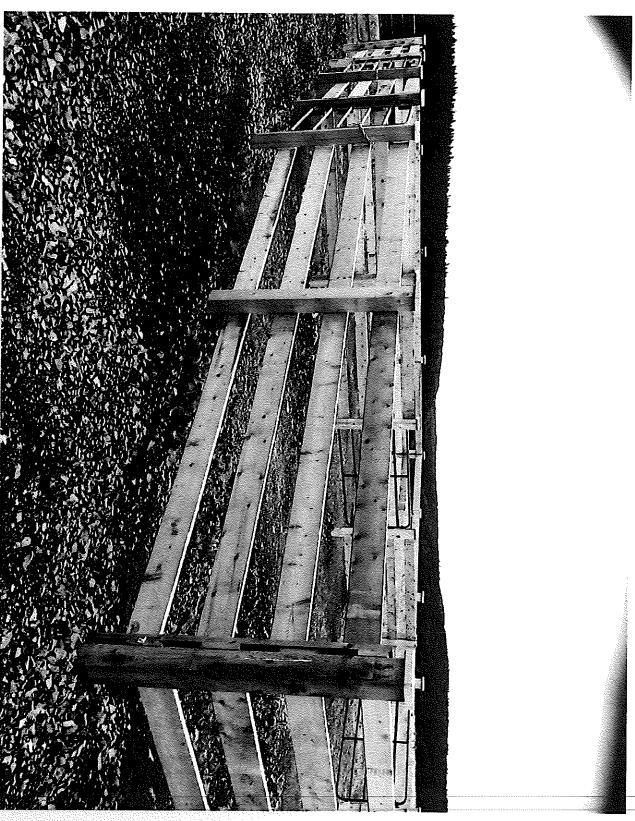
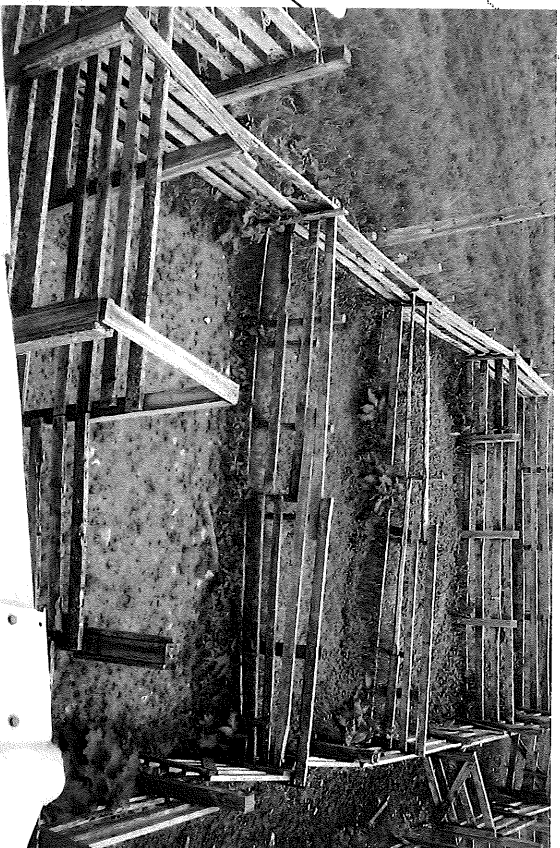
Loading Ramp for Cattle

Before and After



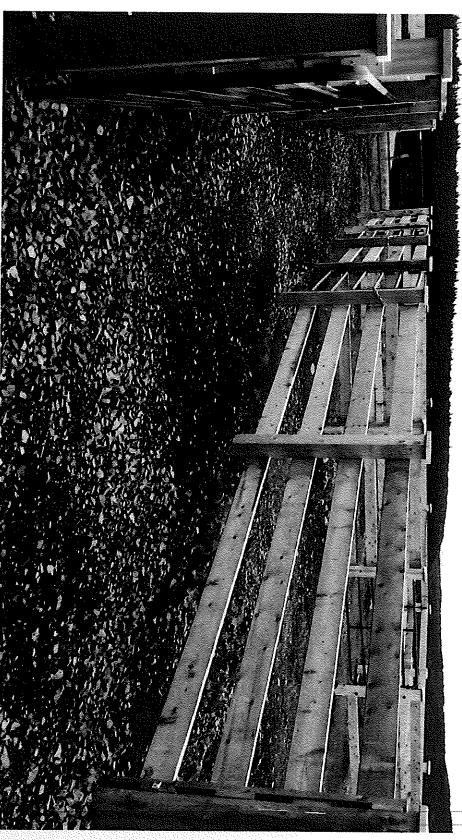
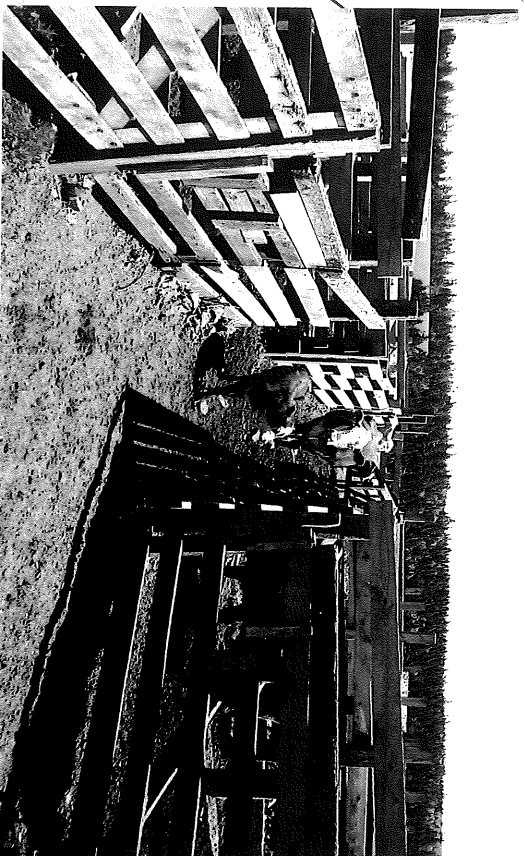
Back Corrals Rebuilt – 2018

Before and After



Alley at the Back Corral

Before and After



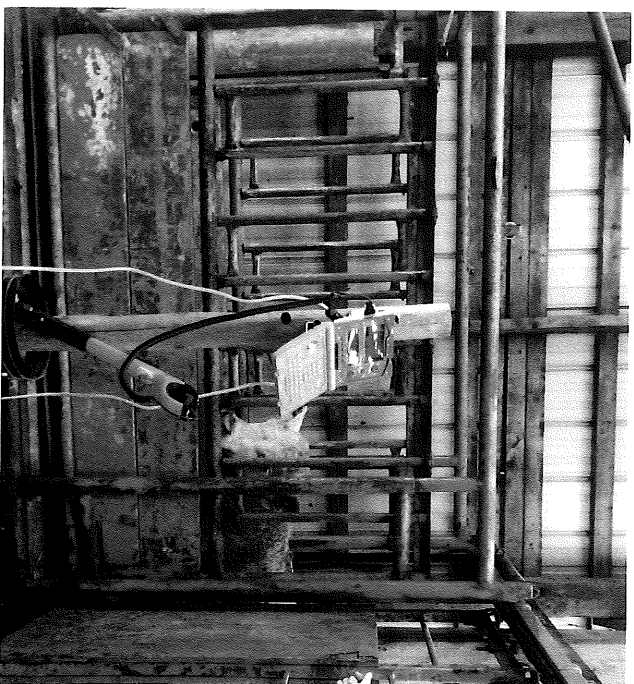
Gravel at the Water Tub

Before and After



Cattle Handling Chute

Before and After





Plans for the Future

- ▶ **Electric Fence needs to be upgraded to 2-strand wire in several fields**
- ▶ **Fence lines and posts need to be checked, repaired if necessary, in all fields**
- ▶ **New gate posts, handles and gates will be installed at several fields**
- ▶ **Fix up pump house for well**
- ▶ **Water supply upgrades**